

Series : FTMS/FTM

Perfect Solution

for Transfer of Corrosive, Hygienic
& Viscous Liquid



All Stainless Steel
ROTARY TWIN GEAR PUMPS

*“Let Our
Quality Speak
For Itself”*

ADVANCED TECHNOLOGY FOR PUMPING VISCOUS LIQUID

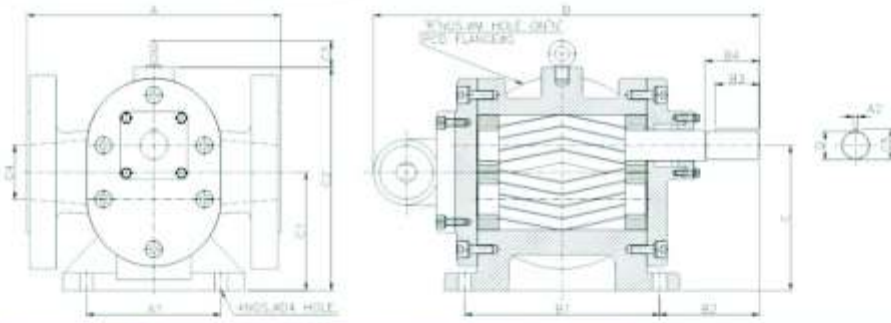
Fluid Tech Systems offers "ROTOFLUID" brand gear pump Model "FTMS" which is heavy duty foot mounting type positive displacement rotary twin gear pump. Model "FTMS" having all stainless steel (SS-316) in four piece construction with investment cast. Due to four piece construction it can be easy clean and maintain. These pumps having a double helical refined SS-316 gear shaft that are nitrated to give longer life. Due to Double helical gear it prevent axial and side thrust which help to increase life & performance of pump. The teflon coated dry running DU bush bearing, supported on bronze wearing plate, placed inside the pump casing, alternatively bronze wearing plate cum bushes can also be provided for thicker viscous liquid application. The stuffing box is fitted with "GFO" pack sealant with provision to fit mechanical shaft seal. These pumps provide with add-on type pressure relief valve. To facilitate the heating of the pump by steam or thermic fluid etc. the jacketing construction should be selected.

The pumps made by **Fluid Tech systems** have flange at the end of suction & the customer can get an instant delivery of ½" to 6" size, which can be operated up to pressure of 10 kg/cm² with 13 LPM to 1330 LPM flow capacity and are suitable for maximum temperature up to 200°C and maximum viscosity up to 1,00,000 SSU.

Model FTM : All feature are same as FTMS but there are the following changes

• **Casing** : available in C.I. and WCB casting. • **Shaft** : available in SS 316, EN-9, EN-36 and SAE 8620. • **Gear** : available in SS 316 and EN-24 H. nitride.

DIMENSIONAL DRAWING



MATERIAL OF CONSTRUCTION

| Part | Material For FTMS | Material For FTM |
|----------------------|-----------------------|------------------|
| Pump Body | CF8M [SS-316] | C.I./WCB Casting |
| Front Cover | CF8M [SS-316] | C.I./WCB Casting |
| Back Cover | CF8M [SS-316] | C.I./WCB Casting |
| Gland Cover | CF8M [SS-316] | C.I./WCB Casting |
| Rotor & Stator Shaft | AISI [SS-316] / EN-57 | EN-36/SS-316 |
| Gear | AISI [SS-316] | AISI [SS-316] |
| Bushes | Teflon Coated DU | Teflon Coated DU |
| Wear Plate | Bronze | Bronze |
| R.V. Housing | AISI [SS-316] | AISI [SS-316] |
| R.V. Piston | AISI [SS-316] | AISI [SS-316] |
| R.V. Spring | Mild Steel | Mild Steel |
| R.V. AD. Screw | Mild Steel | Mild Steel |
| Key | AISI [SS-316] | AISI [SS-316] |
| Sealing | "GFO" Peck/Mech. Seal | "GFO" Peck |

MODEL & DIMENSIONAL DRAWING DETAILS

| PUMP MODEL | CAPACITY AT 1440 RPM | | | OVERALL DIMENSIONS | | | MOUNTING DIMENSIONS | | | | | | SHAFT DIMENSIONS | | | | | FLANGE DIMENSIONS | | | | | |
|------------|----------------------|--------|--------------------|--------------------|-----|-------|---------------------|-----|-----|-----|----|----|------------------|-----|----|-----|----|-------------------|---|----|-----|-----|---------|
| | LPM | US GPM | M ³ /hr | A | B | C2 C3 | A1 | B1 | B2 | C4 | D4 | OD | C | C1 | B3 | B4 | A2 | C5 | R | M | N | G | WT. KG. |
| FTMS-050-S | 13.0 | 3.30 | 0.75 | 150 | 220 | 130 | 80 | 100 | 75 | ½" | 08 | 12 | 80 | 70 | 26 | 38 | 04 | 13 | 4 | 16 | 60 | 89 | 8.5 |
| FTMS-050-M | 16.6 | 4.40 | 1.00 | | | - | | | | | | | | | | | | | | | | | |
| FTMS-100-S | 30.0 | 7.92 | 1.80 | 160 | 255 | 135 | 90 | 110 | 90 | 1" | 10 | 15 | 90 | 75 | 29 | 38 | 05 | 18 | 4 | 16 | 79 | 108 | 9.1 |
| FTMS-100-M | 37.5 | 9.90 | 2.25 | | | - | | | | | | | | | | | | | | | | | |
| FTMS-150-S | 60.0 | 15.8 | 3.60 | 180 | 300 | 155 | 105 | 130 | 103 | 1½" | 10 | 21 | 100 | 80 | 34 | 45 | 06 | 24 | 4 | 16 | 98 | 127 | 12 |
| FTMS-150-M | 75.0 | 19.8 | 4.50 | | | - | | | | | | | | | | | | | | | | | |
| FTMS-200-S | 100.0 | 26.4 | 6.00 | 200 | 335 | 165 | 110 | 150 | 118 | 2" | 12 | 24 | 112 | 90 | 40 | 55 | 06 | 27 | 4 | 19 | 121 | 152 | 22 |
| FTMS-200-M | 125.0 | 33.0 | 7.50 | | | - | | | | | | | | | | | | | | | | | |
| FTMS-250-S | 150.0 | 40.0 | 9.00 | 220 | 370 | 200 | 130 | 160 | 140 | 2½" | 15 | 28 | 132 | 105 | 40 | 65 | 08 | 31 | 4 | 19 | 140 | 178 | 28 |
| FTMS-250-M | 200.0 | 52.9 | 12.00 | | | 55 | | | | | | | | | | | | | | | | | |
| FTMS-300-S | 250.0 | 66.0 | 15.00 | 235 | 455 | 240 | 160 | 220 | 160 | 3" | 19 | 32 | 160 | 130 | 55 | 75 | 10 | 37 | 4 | 19 | 152 | 190 | 40 |
| FTMS-300-M | 333.0 | 88.0 | 20.00 | | | 55 | | | | | | | | | | | | | | | | | |
| FTMS-400-S | 415.0 | 111.0 | 25.00 | 275 | 530 | 270 | 180 | 270 | 170 | 4" | 19 | 36 | 180 | 145 | 65 | 85 | 10 | 41 | 8 | 19 | 190 | 229 | 69 |
| FTMS-400-M | 500.0 | 132.9 | 30.00 | | | 65 | | | | | | | | | | | | | | | | | |
| FTMS-500-S | 600.0 | 158.0 | 36.00 | 300 | 600 | 305 | 200 | 280 | 200 | 5" | 19 | 45 | 200 | 160 | 65 | 100 | 14 | 52 | 8 | 22 | 216 | 254 | 110 |
| FTMS-500-M | 750.0 | 197.5 | 45.00 | | | 66 | | | | | | | | | | | | | | | | | |
| FTMS-600-S | 1000.0 | 263.0 | 60.00 | 340 | 663 | 345 | 220 | 350 | 216 | 6" | 22 | 50 | 225 | 180 | 70 | 120 | 14 | 57 | 8 | 22 | 241 | 279 | 170 |
| FTMS-600-M | 1335.0 | 351.0 | 80.00 | | | 76 | | | | | | | | | | | | | | | | | |

FEATURES

- Herringbone rotor design eliminate side thrust.
- Modified tooth profile enhance tooth life.
- Optional steam jacket pump available.
- In-built relief valve construction
- Gear is double helical design which prevent axial load.
- Corrosion prevent pump

APPLICATION

- High pressure coolant transfer application for machine tools.
- Handling thinner liquid at moderate measuring.
- Light fuel pressurizing application for loader and burners.
- Heavy viscous liquid transfer application like Molasses, Magma, Tar, Bitumen, Soap stock, Paints, Varnish, Suspended, Sugar juice, Vegetable oil, Printing ink, Paper pulp, Spent wash.

* All dimensions are in millimeters. Unless otherwise stated, Specifications are subject to change without prior notice as improvements are made from time to time.